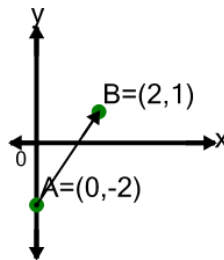




Math worksheet on 'Cartesian Grid - Vector Between Displayed Points With Coordinates (Angle) (Level 2)'. Part of a broader unit on 'Cartesian Grid Basics - Practice'

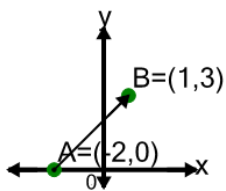
Learn online: app.mobius.academy/math/units/cartesian_grid_practice/

1 Find the (x,y) change to go from point A to point B on the diagram



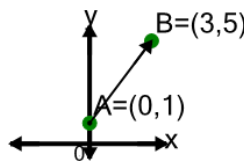
a	(1,3)	b	(2,3)
c	(2,-3)	d	(2,2)
e	(-2,3)	f	(3,2)

2 Find the (x,y) change to go from point A to point B on the diagram



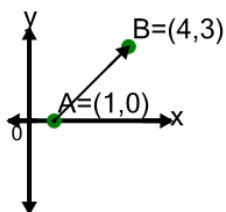
a	(3,2)	b	(4,3)
c	(3,-3)	d	(-3,3)
e	(2,3)	f	(3,3)

3 Find the (x,y) change to go from point A to point B on the diagram



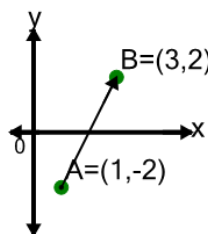
a	(3,4)	b	(3,5)
c	(-4,3)	d	(4,-3)
e	(3,-4)	f	(4,3)

4 Find the (x,y) change to go from point A to point B on the diagram



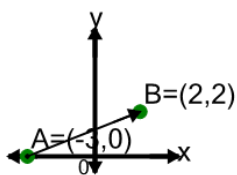
a	(-3,3)	b	(3,3)
c	(3,2)	d	(3,-3)
e	(3,4)	f	(4,3)

5 Find the (x,y) change to go from point A to point B on the diagram



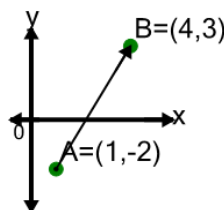
a	(2,3)	b	(1,4)
c	(4,2)	d	(-2,4)
e	(-4,2)	f	(2,4)

6 Find the (x,y) change to go from point A to point B on the diagram



a	(5,2)	b	(2,-5)
c	(2,5)	d	(4,2)
e	(5,3)	f	(5,1)

7 Find the (x,y) change to go from point A to point B on the diagram



a	(3,5)	b	(3,4)
c	(2,5)	d	(-3,5)
e	(5,-3)	f	(-5,3)