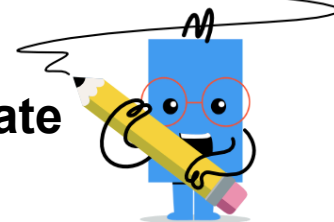
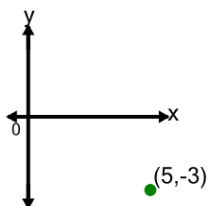




## Cartesian Grid - Meaning of Y Coordinate (no grid)

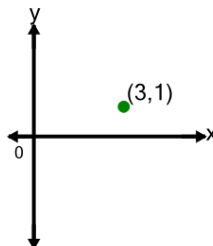


**1** What does the value -3 in the point's coordinate mean?



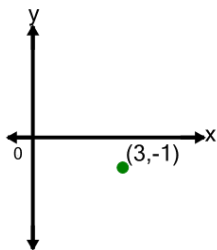
- A x is equal to 3
- B x is equal to -3
- C y is equal to -3
- D y is equal to 3

**2** What does the value 1 in the point's coordinate mean?



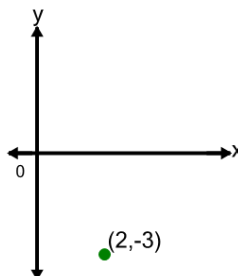
- A x is equal to 1
- B y is equal to -1
- C x is equal to -1
- D y is equal to 1

**3** What does the value -1 in the point's coordinate mean?



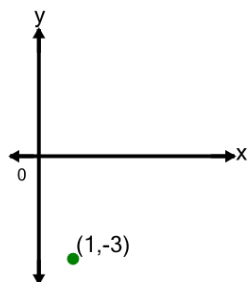
- A x is equal to 1
- B y is equal to -1
- C y is equal to 1
- D x is equal to -1

**4** What does the value -3 in the point's coordinate mean?



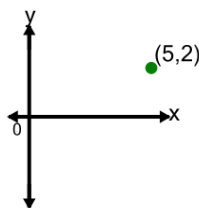
- A x is equal to 3
- B x is equal to -3
- C y is equal to -3
- D y is equal to 3

**5** What does the value -3 in the point's coordinate mean?



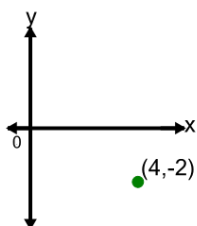
- A x is equal to 3
- B x is equal to -3
- C y is equal to -3
- D y is equal to 3

**6** What does the value 2 in the point's coordinate mean?



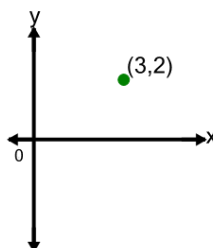
- A x is equal to -2
- B y is equal to -2
- C y is equal to 2
- D x is equal to 2

**7** What does the value -2 in the point's coordinate mean?



- A x is equal to -2
- B y is equal to -2
- C y is equal to 2
- D x is equal to 2

**8** What does the value 2 in the point's coordinate mean?



- A y is equal to -2
- B y is equal to 2
- C x is equal to -2
- D x is equal to 2