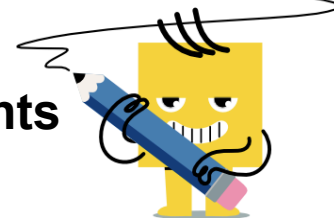




Run of a Line from Coordinates of Points



1 Find the run of the line (change in x) between the two (x, y) points

(4, 8) and (10,9)

A	B	C	D	E	F
12	-6	3.6	6	16.8	-3.6

2 Find the run of the line (change in x) between the two (x, y) points

(3, 1) and (7,6)

A	B	C	D	E	F
9.6	10.4	4	5	7.2	2.4

3 Find the run of the line (change in x) between the two (x, y) points

(2, 0) and (9,8)

A	B	C	D	E	F
12.6	14	-7	2.8	7	8

4 Find the run of the line (change in x) between the two (x, y) points

(1, 6) and (1,2)

A	B
0	-4

5 Find the run of the line (change in x) between the two (x, y) points

(2, 10) and (5,1)

A	B	C	D	E	F
-3	-9	9	2.4	3	4.2

6 Find the run of the line (change in x) between the two (x, y) points

(1, 2) and (6,4)

A	B	C	D	E	F
2	-2	-3	-1	5	-5

7 Find the run of the line (change in x) between the two (x, y) points

(6, 2) and (7,7)

A	B	C	D	E	F
2.8	1.6	-1	0.4	1	5

8 Find the run of the line (change in x) between the two (x, y) points

(8, 1) and (10,4)

A	B	C	D	E	F
3	2	-2	0	-1.2	-0.8