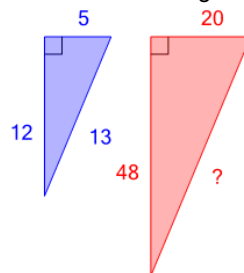




Math worksheet on 'Pythagorean Triple Pairs - Solve Either (Level 2)'. Part of a broader unit on 'Pythagoras - Practice'

Learn online: app.mobius.academy/math/units/pythagoras_practice/

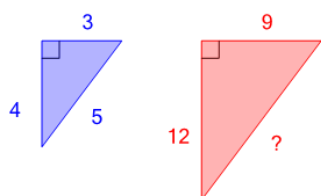
1 Find the length of the missing side given that these are similar triangles



(not to scale)

a	b	c
57	77	92
d	e	f
72	12	52

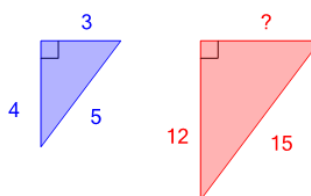
2 Find the length of the missing side given that these are similar triangles



(not to scale)

a	b	c
13	14	7
d	e	f
12	15	17

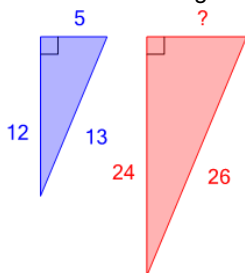
3 Find the length of the missing side given that these are similar triangles



(not to scale)

a	b	c
14	6	1
d	e	f
9	11	10

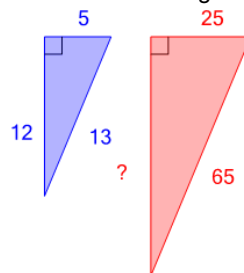
4 Find the length of the missing side given that these are similar triangles



(not to scale)

a	b	c
10	3	11
d	e	f
19	6	17

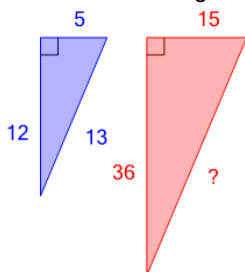
5 Find the length of the missing side given that these are similar triangles



(not to scale)

a	b	c
60	36	24
d	e	f
42	12	78

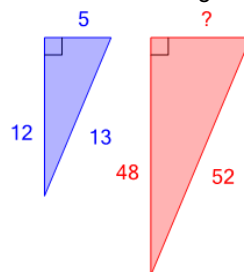
6 Find the length of the missing side given that these are similar triangles



(not to scale)

a	b	c
24	48	21
d	e	f
36	39	42

7 Find the length of the missing side given that these are similar triangles



(not to scale)

a	b	c
8	38	32
d	e	f
16	20	30