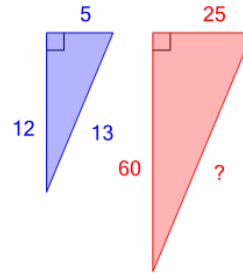




Math worksheet on 'Pythagorean Triple Pairs - Solve Hypotenuse (Level 2)'. Part of a broader unit on 'Pythagoras - Practice'

Learn online: [app.mobius.academy/math/units/pythagoras\\_practice/](http://app.mobius.academy/math/units/pythagoras_practice/)

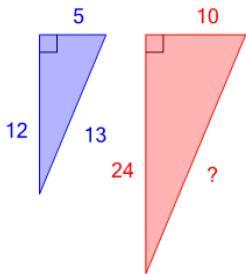
1 Find the length of the missing side given that these are similar triangles



(not to scale)

a	b	c
65	29	89
d	e	f
107	113	35

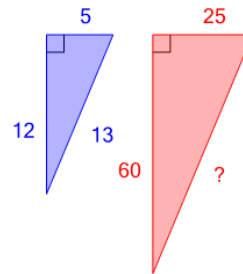
2 Find the length of the missing side given that these are similar triangles



(not to scale)

a	b	c
16	42	10
d	e	f
12	26	24

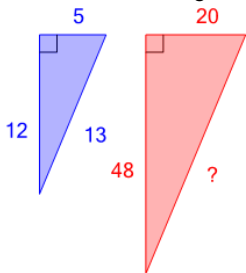
3 Find the length of the missing side given that these are similar triangles



(not to scale)

a	b	c
59	65	119
d	e	f
113	29	11

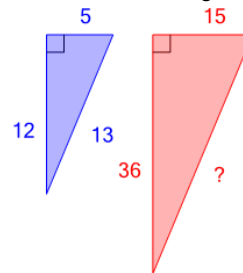
4 Find the length of the missing side given that these are similar triangles



(not to scale)

a	b	c
37	67	57
d	e	f
47	52	77

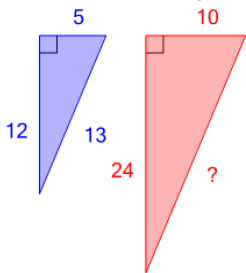
5 Find the length of the missing side given that these are similar triangles



(not to scale)

a	b	c
45	48	66
d	e	f
54	39	33

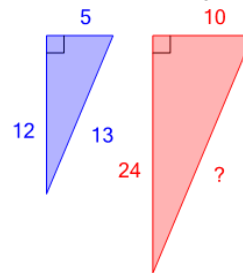
6 Find the length of the missing side given that these are similar triangles



(not to scale)

a	b	c
10	20	14
d	e	f
26	30	36

7 Find the length of the missing side given that these are similar triangles



(not to scale)

a	b	c
20	22	12
d	e	f
44	26	16