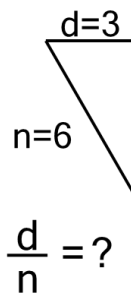




Math worksheet on 'Ratios of Lengths - Both Lengths to Ratio, Whole Numbers - Angle Line Display (Level 1)'. Part of a broader unit on 'Ratios of Lengths - Intro'

Learn online: app.mobius.academy/math/units/ratios_lengths_calculating_intro/

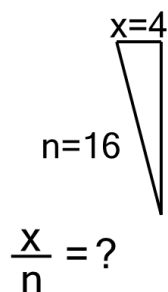
1



Solve for the ratio of lengths of line n over line d

a	2	b	1.11
c	0.41	d	0.64
e	0.9	f	2.89

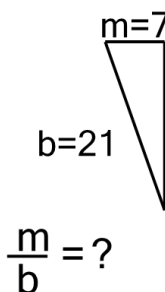
2



Solve for the ratio of lengths of line n over line x

a	0.32	b	4.44
c	0.45	d	4
e	0.2	f	3.56

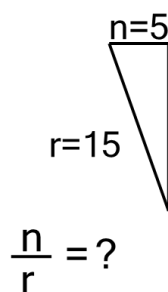
3



Solve for the ratio of lengths of line m over line b

a	2.14	b	0.07
c	0.73	d	1.5
e	0.33	f	0.53

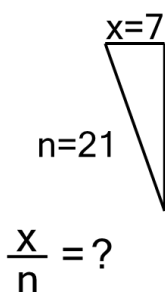
4



Solve for the ratio of lengths of line r over line n

a	3	b	0.38
c	2.33	d	0.43
e	0.75	f	0.3

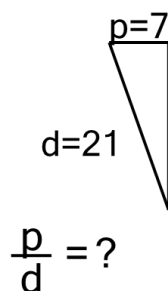
5



Solve for the ratio of lengths of line x over line n

a	0.73	b	0.13
c	0.33	d	1.36
e	0.67	f	0.88

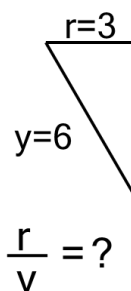
6



Solve for the ratio of lengths of line p over line d

a	0.33	b	7.5
c	1.13	d	0.47
e	1.5	f	15

7



Solve for the ratio of lengths of line y over line r

a	0.56	b	1.78
c	0.89	d	2
e	2.44	f	0.9