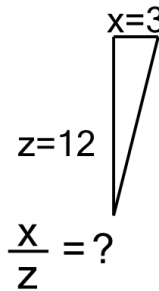




Math worksheet on 'Ratios of Lengths - Both Lengths to Ratio, Whole Numbers - Right Angle Line Display (Level 1)'. Part of a broader unit on 'Ratios of Lengths - Intro'

Learn online: app.mobius.academy/math/units/ratios_lengths_calculating_intro/

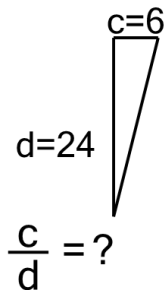
1



Solve for the ratio of lengths of line x over line z

a	1.82	b	0.75
c	1.54	d	0.25
e	0.05	f	4

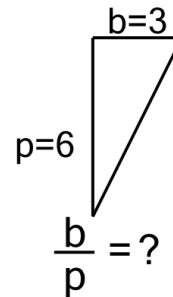
2



Solve for the ratio of lengths of line c over line d

a	20	b	4
c	0.35	d	2.86
e	0.25	f	1.54

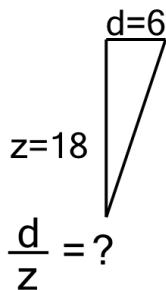
3



Solve for the ratio of lengths of line b over line p

a	2	b	0.5
c	0.9	d	0.77
e	3.33	f	0.91

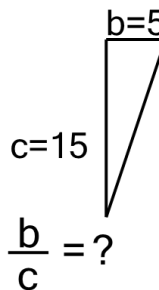
4



Solve for the ratio of lengths of line d over line z

a	1.5	b	15
c	0.53	d	0.33
e	7.5	f	1.36

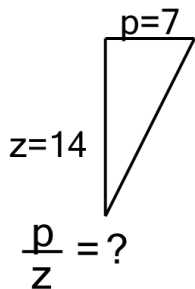
5



Solve for the ratio of lengths of line b over line c

a	0.33	b	1.13
c	1.88	d	0.47
e	1.07	f	0.67

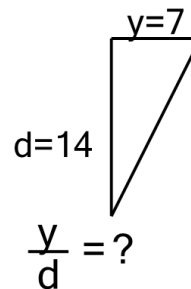
6



Solve for the ratio of lengths of line p over line z

a	10	b	0.3
c	1.1	d	0.7
e	0.5	f	2

7



Solve for the ratio of lengths of line y over line d

a	3.33	b	10
c	0.5	d	1.3
e	0.1	f	2