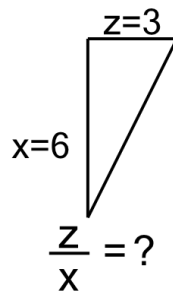




Math worksheet on 'Ratios of Lengths - Both Lengths to Ratio, Whole Numbers - Right Angle Line Display (Level 2)'. Part of a broader unit on 'Ratios of Lengths - Practice'

Learn online: app.mobius.academy/math/units/ratios_lengths_calculating_practice/

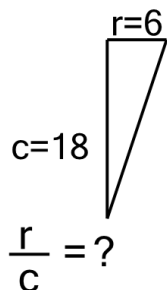
1



Solve for the ratio of lengths of line z over line x

a	1.43	b	1.3
c	0.77	d	0.7
e	0.5	f	0.3

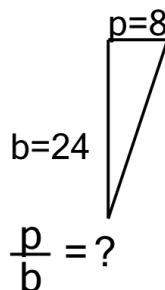
2



Solve for the ratio of lengths of line r over line c

a	2.14	b	1.13
c	1.88	d	0.33
e	0.53	f	1.07

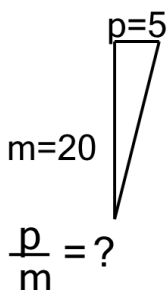
3



Solve for the ratio of lengths of line p over line b

a	0.07	b	3
c	2.14	d	0.67
e	15	f	0.33

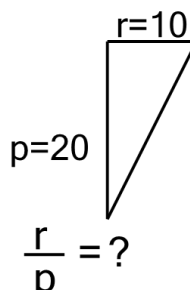
4



Solve for the ratio of lengths of line p over line m

a	0.55	b	6.67
c	0.85	d	20
e	1.82	f	0.25

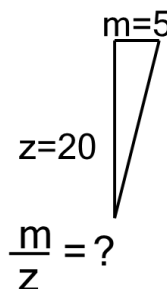
5



Solve for the ratio of lengths of line r over line p

a	0.1	b	0.5
c	1.43	d	0.7
e	3.33	f	0.91

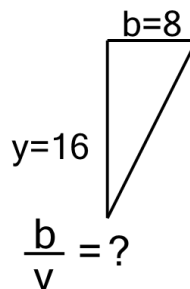
6



Solve for the ratio of lengths of line m over line z

a	0.65	b	2.86
c	0.45	d	0.35
e	1.05	f	0.25

7



Solve for the ratio of lengths of line b over line y

a	0.5	b	0.9
c	2	d	0.3
e	0.77	f	3.33