



Math worksheet on 'Slope - Find Equivalent - Standard Form to Graph (Level 1)'. Part of a broader unit on 'Slopes and Perpendiculars - Intro'

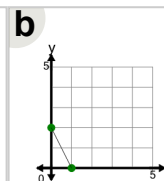
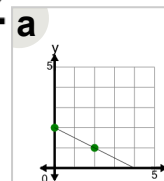
Learn online:

app.mobius.academy/math/units/line_equations_and_perpendiculars_intro/

1

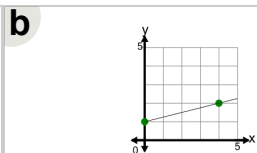
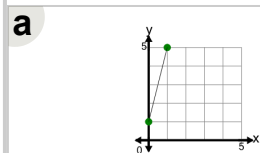
What graphed line shows this standard form line equation?

$$2x + 1y = 2$$



2 What graphed line shows this standard form line equation?

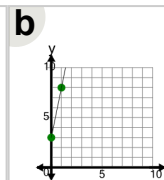
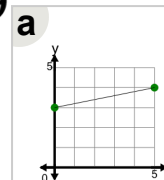
$$-0.25x + 1y = 1$$



3

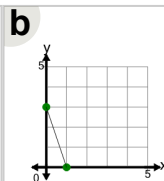
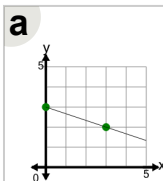
What graphed line shows this standard form line equation?

$$-0.6x + 3y = 9$$



4 What graphed line shows this standard form line equation?

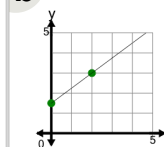
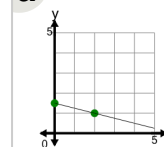
$$6x + 2y = 6$$



5

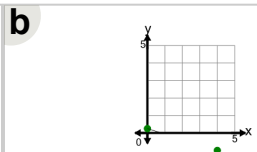
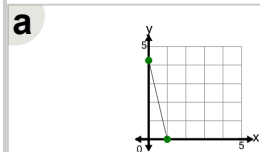
What graphed line shows this standard form line equation?

$$1x + 2y = 3$$



6 What graphed line shows this standard form line equation?

$$0.25x + 1y = 0.25$$



7

What graphed line shows this standard form line equation?

$$-2x + 2y = 2$$

