



Math worksheet on 'Slope - Find Perpendicular - Slope Y Intercept Form to Graph (Level 1)'. Part of a broader unit on 'Slopes and Perpendiculars - Intro'

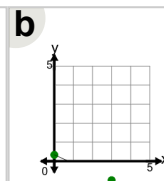
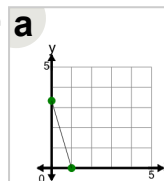
Learn online:

app.mobius.academy/math/units/line_equations_and_perpendiculars_intro/

1

What line has a slope that is PERPENDICULAR to the slope of this line equation?

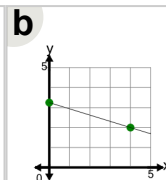
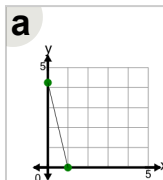
$$y = 3x + 1$$



2

What line has a slope that is PERPENDICULAR to the slope of this line equation?

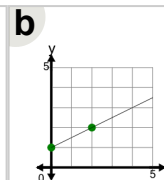
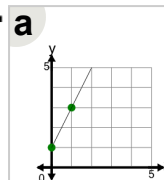
$$y = 4x + 3$$



3

What line has a slope that is PERPENDICULAR to the slope of this line equation?

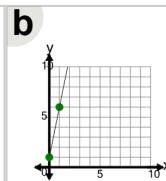
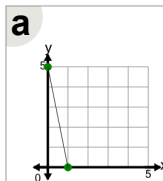
$$y = -2x + 2$$



4

What line has a slope that is PERPENDICULAR to the slope of this line equation?

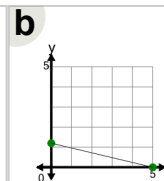
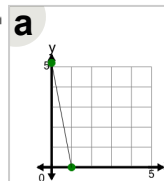
$$y = -\frac{1}{5}x + 1.2$$



5

What line has a slope that is PERPENDICULAR to the slope of this line equation?

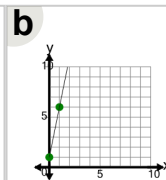
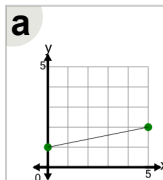
$$y = 5x + 2$$



6

What line has a slope that is PERPENDICULAR to the slope of this line equation?

$$y = -5x + 5$$



7

What line has a slope that is PERPENDICULAR to the slope of this line equation?

$$y = -4x + 4$$

