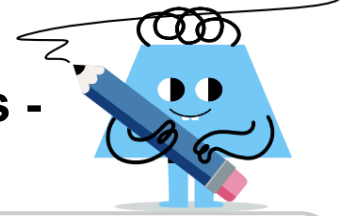




Time - Elapsed - Two Times To Minutes - Full Hours



1 How many minutes later is the second clock?

9:00 vs. 10:00

A	0 min	B	150 mins
C	90 mins	D	60 mins
E	165 mins	F	120 mins

2 How many minutes later is the second clock?

1:00 vs. 2:00

A	120 mins	B	60 mins
C	180 mins	D	135 mins
E	15 mins	F	0 min

3 How many minutes later is the second clock?

7:00 vs. 8:00

A	180 mins	B	0 min
C	15 mins	D	60 mins
E	120 mins	F	150 mins

4 How many minutes later is the second clock?

8:00 vs. 9:00

A	135 mins	B	60 mins
C	45 mins	D	120 mins
E	30 mins	F	165 mins

5 How many minutes later is the second clock?

6:00 vs. 7:00

A	0 min	B	30 mins
C	180 mins	D	120 mins
E	60 mins	F	15 mins

6 How many minutes later is the second clock?

3:00 vs. 4:00

A	60 mins	B	90 mins
C	30 mins	D	120 mins
E	15 mins	F	180 mins

7 How many minutes later is the second clock?

5:00 vs. 6:00

A	0 min	B	120 mins
C	45 mins	D	180 mins
E	60 mins	F	135 mins

8 How many minutes later is the second clock?

4:00 vs. 5:00

A	165 mins	B	15 mins
C	180 mins	D	60 mins
E	30 mins	F	45 mins