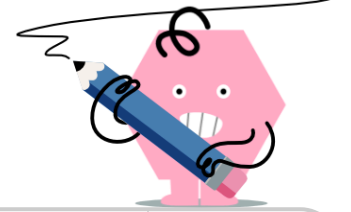
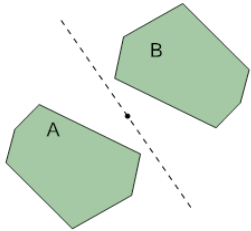




## Transformations - Identify Type

**1**

Identify the transformation that changes shape A into shape B



A

Translation

B

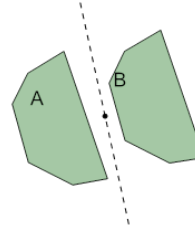
Rotation

C

Reflection

**2**

Identify the transformation that changes shape A into shape B



A

Translation

B

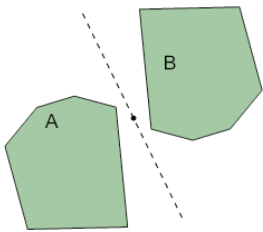
Reflection

C

Rotation

**3**

Identify the transformation that changes shape A into shape B



A

Rotation

B

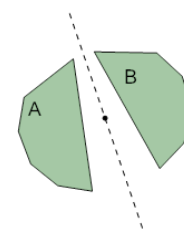
Reflection

C

Translation

**4**

Identify the transformation that changes shape A into shape B



A

Translation

B

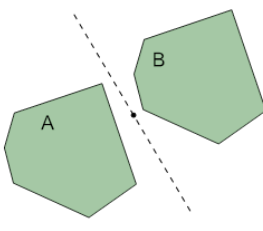
Reflection

C

Rotation

**5**

Identify the transformation that changes shape A into shape B



A

Reflection

B

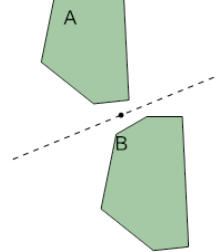
Translation

C

Rotation

**6**

Identify the transformation that changes shape A into shape B



A

Reflection

B

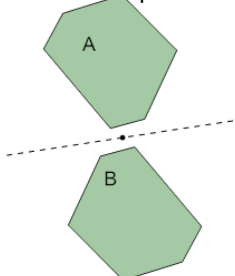
Rotation

C

Translation

**7**

Identify the transformation that changes shape A into shape B



A

Reflection

B

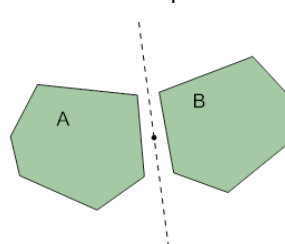
Translation

C

Rotation

**8**

Identify the transformation that changes shape A into shape B



A

Translation

B

Rotation

C

Reflection